

Rhamnaceae

The Checklist of Coastal Forests lists 5 Genera, 9 Species

I am growing

Ziziphus sp

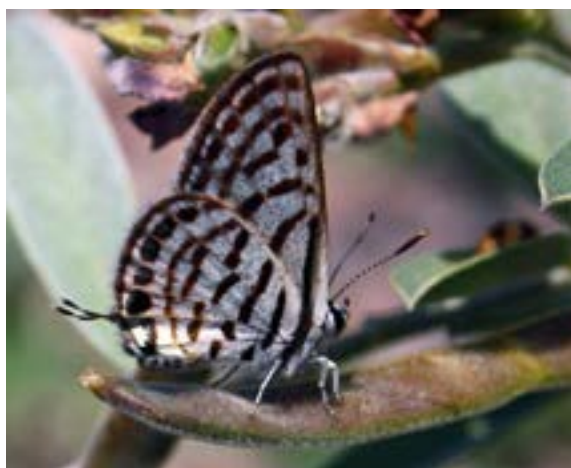
Larval host to:

Tarucus Sp (inc rosacea)

Tuxentius Sp (inc melaena)



Tuxentius melaena - dark pied Pierrot
(c) Steve Woodhall



Tarucus rosacea - Mediterranean pierrot
butterfly
c) Sharp Photography